

# DYNAUDIO Custom

## Sub RCC



## Dynaudio Custom Install

In-wall and in-ceiling installations:  
authentic Dynaudio speakers, engineered to entertain

Dynaudio's Sub RCC is a compact in wall or in ceiling subwoofer. Designed to be flexible and simple to install with no additional backboxes or drywall reinforcement required, the reaction cancelling design means that very little vibration is transferred to the mounting surface.

The sub is supplied with two mounting options, the retro fit chassis allows for installing into a pre-existing drywall surface. The pre-con mounting brackets mean you can mount directly to the wall studs before the drywall goes up, resulting in a smaller aperture and grille finish.

We have partnered with US electronics manufacturer Audio Control for the system amplification, using their RS500 amplifier. Their RS500 allowed our engineers to maximise the performance of the Sub RCC's four long throw race track woofers through sophisticated DSP tuning, which comes pre-loaded on the amplifier, keeping the set up nice and simple.

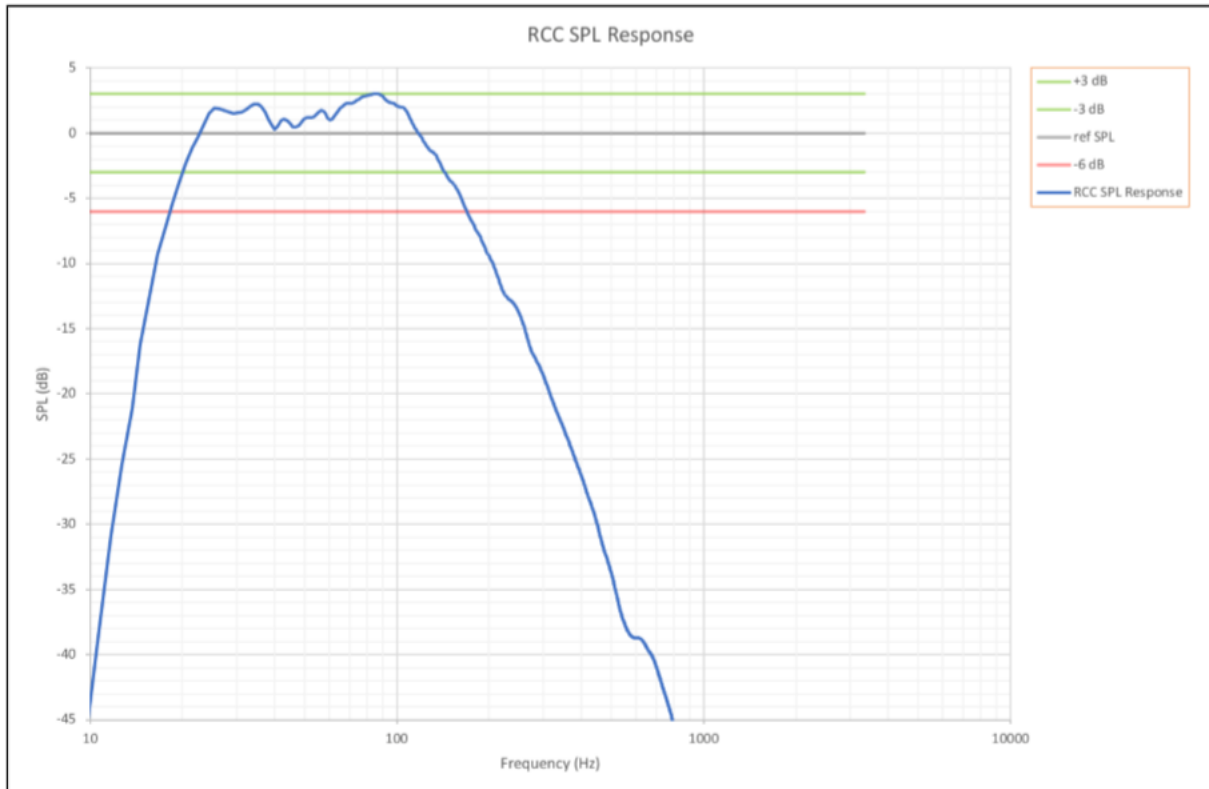
### Sub RCC Specification

Type:	In-wall/in-ceiling Reaction Cancelling subwoofer
Drivers:	4 x 3x6 inch long-throw, race track
Cabinet:	Sealed extruded aluminium
Impedance (nominal/minimum):	8 Ω / 5 Ω
Sensitivity (dB 2.83V @ 1m):	92 dB
Continuous power:	160 W
Long term power:	400 W
System Max SPL (CTA-2010-B):	101 dB (half space)
System Frequency Response +/-3db:	20 Hz – 145 Hz
Grille:	Painted steel, retro fit and pre-con included, Magnetic attachment, Paintable.
Amplifier:	Audio Control RS500 DSP, single channel
Amplifier Continuous Power output:	500 W into 4 Ohm and 8 Ohm
Amplifier Minimum load:	2 * Sub RCC
Amplifier Frequency response:	15 Hz – 350 Hz
S/N Ratio:	>98 dB, A-Wtd, Ref. Full Output
THD:	0.1%
DSP:	Graphic EQ, Parametric EQ, Crossover, Phase Control, Delay
Amplifier Inputs:	1 XLR, 1 LFE, 2 RCA, 1 Speaker Level
Amplifier Loop Outputs:	1 XLR 1LFE 2 RCA
Amplifier Control:	12v Remote Trigger/Ethernet (10BaseT TCP/IP)/12v Trigger out/IR receiver input
Power:	230 VAC, 50/60hz

# DYNAUDIO Custom

## Sub RCC

### Frequency/ SPL response



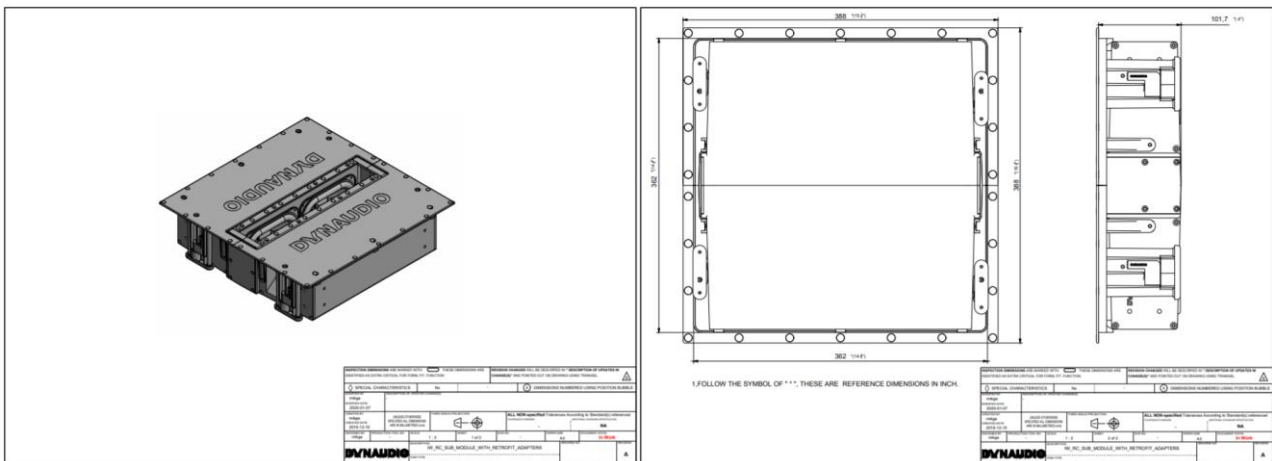
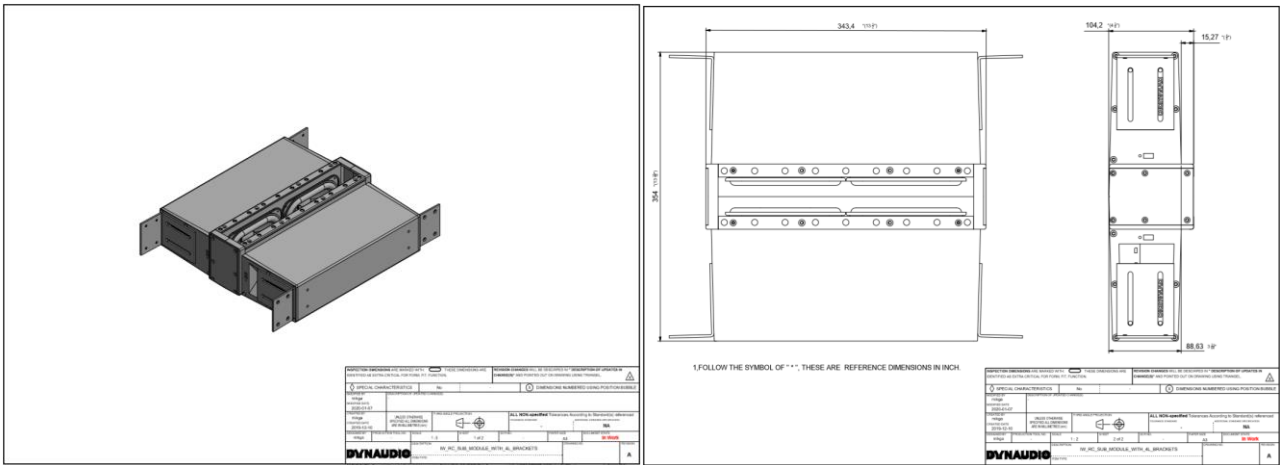
### Dimensions and Weights

Sub dimensions pre-fit (W x H x D):	355 x 354 x 101 mm 14 x 14 x 4 in
Sub Dimensions retro-fit (W x H x D):	400 x 400 x 101 mm 15 3/4 x 15 3/4 x 4 in
Cut-out dimensions retro-fit:	366 x 366 mm 14 3/8 x 14 3/8 in
Cut-out dimensions pre-fit:	86 x 366 mm 14 3/8 x 14 3/8 in
Sub RCC weight	10kg/22lbs (including retro fit kit)
Amplifier Dimensions (W x D x H):	430 x 445 x 45 (1U) mm 17 x 17.5 x 1.75 (1U) in
Rack Ears	Included
Amplifier Weight:	6.8kg/14.9lbs

# DYNAUDIO Custom

## Sub RCC

### CAD images



# **DYNAUDIO** Custom

## Sub RCC

### **RCC Sub, included in the Box**

RCC Subwoofer  
Retro-fit mounting kit  
Large paintable low profile magnetic grille for retro-fit mount  
Pre-con mounting brackets  
Small paintable low profile magnetic grille for pre-con mounting  
Cutout out templates  
Drywall depth spacers for pre-con grille  
Instructions for use  
Warranty

### **Audio Control Amplifier, included in the box**

RS 500 amplifier  
power cord (EU)  
user manual,  
Audio Control warranty